



UNCONTROLLED if COPIED or PRINTED

Keswick School is not liable for the contents of this document

**This Addendum must be read in conjunction with the School's own Child Protection Policy and procedures available on the school website.**

## **CHILD PROTECTION POLICY AND PROCEDURES – COVID 19 ADDENDUM (KSMAT/STAT/040B)**

**September 2020**

<i>At the time of publishing the following roles were held:</i>	
Head teacher	Mr S Jackson
Designated Safeguarding Lead	Miss T Gibbin
Deputy Designated Safeguarding Lead(s)	Mrs C Hiddleston
Mental Health Lead	Miss T Gibbin
Designated Teacher for looked-after or previously looked-after children	Miss T Gibbin
Governor with safeguarding responsibility	Mrs L Boal

Please note: The above roles are held by individuals in attendance at the school when it is operating normally. In relation to a local lockdown, the names of those with 'leading' roles may change.



## CHILD PROTECTION POLICY AND PROCEDURES – COVID 19 ADDENDUM

### REVIEW SHEET

The information in the table below details earlier versions of this document with a brief description of each review and how to distinguish amendments made since the previous version date.

Version Number	Version Description	Date of Revision
1	Original	March 2020
2	Revised taking into account DfE guidance issued on 20 May 2020 - Coronavirus (COVID-19): safeguarding in schools, colleges and other providers and the fact that some pupils will be returning to school from 1 June 2020.	June 2020
3	Updated to take account of the full opening of schools from September 2020 and Keeping Children Safe in Education 2020 and Gov.Uk 'Contain Framework – A guide for local decision makers'	September 2020

Ref:	Child Protection Addendum Covid-19	Type:	Policy
Version:	03	Owner:	Head teacher
Date:	September 2020	Status:	LGB Approved

# CHILD PROTECTION POLICY AND PROCEDURES – COVID 19 ADDENDUM

## Contents

1.0	Introduction	Page 4
2.0	Context	Page 4
3.0	The current school position and local advice	Page 4
4.0	Vulnerable children/groups	Page 5
5.0	Attendance and monitoring	Page 5
6.0	Safeguarding Arrangements	Page 6
7.0	Reporting a concern	Page 7
8.0	Peer on peer/child on child abuse	Page 7
9.0	Online Safety	Page 7
10.0	Mental health and wellbeing	Page 8
11.0	Safety of children using online systems remote from school	Page 8
12.0	Supporting children not in school	Page 9
	Appendix 1	Model contact form for children with a Social Worker
	Appendix 2	20 Safeguarding Considerations for Livestreaming

Ref:	Child Protection Addendum Covid-19	Type:	Policy
Version:	03	Owner:	Head teacher
Date:	September 2020	Status:	LGB Approved

# CHILD PROTECTION POLICY AND PROCEDURES – COVID 19 ADDENDUM

## 1.0 INTRODUCTION

- 1.1 This addendum has been created following the publication of DfE Guidance for full opening: schools and applies to all schools, whether maintained, non-maintained or independent (including academies, academy trusts, free schools and alternative provision academies), maintained nursery schools and pupil referral units. It is an addendum to the School's Child Protection Policy and procedures which in turn complies with statutory guidance Keeping Children Safe in Education and must be read in conjunction with that Policy and procedures. The Safeguarding and Child Protection Policy and procedures is available on the school website.
- 1.2 Although we aim to have all pupils back at school in the autumn, we also need to plan for those who might need to self-isolate; the possibility of a local or national lockdown and how we will ensure the ongoing safeguarding of children particularly those with a Social Worker or who are otherwise vulnerable. During periods of lockdown in a pandemic, whether experienced by the whole community or by individuals who become ill or receive a positive test result for Covid-19 or must self-isolate because they have come into close contact with someone who has, children may be at home for long periods of time and therefore we will turn to, and work in line with this addendum. Information relating to the various tiers of the lockdown process is available in the Government guidance 'Contain Framework: A guide for local decision makers'. Annex 3 of the guide refers to educational settings.

## 2.0 CONTEXT

- 2.1 ***Following what was an extremely turbulent spring and summer term 2020, the Government's plan was that all pupils, in all year groups, would return to school full-time from the beginning of the autumn term 2020.***
- 2.2 In many respects, the school's existing comprehensive Child Protection Policy and procedures will revert to being in force throughout as was the case prior to the Covid-19 pandemic. The Policy and procedures have been updated to take account of the revised statutory guidance 'Keeping Children Safe in Education'.
- 2.3 This addendum sets out some of the adjustments which may need to be put in place in the event of a local lockdown, periods of self-isolation or where pupils are still shielding because of their medical conditions.

## 3.0 THE CURRENT SCHOOL POSITION AND LOCAL ADVICE

- 3.1 At Keswick School the current position is that the school will be open to all pupils in all year groups.
- 3.2 We have a comprehensive risk assessment in place which will enable the school to fulfil its obligations to pupils, staff and parents in a Covid-secure manner. This risk assessment is a dynamic document and subject to change as the pandemic situation changes and particularly in the event of a local lockdown scenario.

Ref:	Child Protection Addendum Covid-19	Type:	Policy
Version:	03	Owner:	Head teacher
Date:	September 2020	Status:	LGB Approved

#### **4.0 VULNERABLE CHILDREN/GROUPS**

- 4.1 Vulnerable children include those who have an allocated social worker and those children and young people up to the age of 25 with an education, health and care (EHC) plan.
- 4.2 Those who have a social worker include children who have a Child Protection Plan and those who are looked after or have in the past been looked after by the Local Authority. A child may also be deemed to be vulnerable if they have been assessed as being in need or otherwise meet the definition in section 17 of the Children Act 1989.
- 4.3 Senior leaders, especially the Designated Safeguarding Lead (DSL) and Deputy DSL know who most vulnerable children are and are also aware of those on the edge of receiving children’s social care support.
- 4.4 The School will continue to work with and support children’s social workers to help protect vulnerable children. This includes working with and supporting children’s social workers and the local authority virtual school head (VSH) for looked-after and previously looked-after children.
- 4.5 There may also be situations where a child is shielding or clinically extremely vulnerable although shielding advice for all adults and children paused on 1 August 2020. This means that even the small number of pupils who will remain on the shielded patient list can also return to school, as can those who have family members who are shielding. Guidance on shielding is set out in Gov UK guidance on [shielding and protecting people defined on medical grounds as extremely vulnerable](#). If rates of the disease rise in local areas, children (or family members) from that areas and that area only, will be advised to shield during the period where rates remain high and therefore they may be temporarily absent. In circumstances where a parent does not want to bring their child to an education setting, and their child is considered vulnerable, the social worker and the school will explore the reasons for this directly with the parent.
- 4.6 Where a pupil is unable to attend school because they are complying with clinical and/or public health advice, we will offer them access to remote education and will monitor engagement with this activity.
- 4.7 Where children are not able to attend school as parents are following clinical and/or public health advice, absence will not be penalised.
- 4.8 Where parents are concerned about the risk of the child contracting COVID-19, the school DSL/Head teacher or the social worker will talk through these anxieties with the parent/carer following the advice set out by Public Health England.

#### **5.0 ATTENDANCE AND MONITORING**

- 5.1 Department for Education (DfE) advice is that education settings will monitor attendance as normal in September.
- 5.2 To support the above, the school will, when communicating with parents/carers, confirm emergency contact numbers are correct and ask for any additional emergency contact numbers

Ref:	Child Protection Addendum Covid-19	Type:	Policy
Version:	03	Owner:	Head teacher
Date:	September 2020	Status:	LGB Approved

where they are available. In all circumstances where a vulnerable child does not take up their place at school, or discontinues, the school will notify the child’s social worker.

## 6.0 SAFEGUARDING ARRANGEMENTS

- 6.1 The school has both a Designated Safeguarding Lead (DSL) and a Deputy DSL. At Keswick School the DSL is Tania Gibbin (Deputy Head Pastoral) and the Deputy DSL is Clare Hiddleston (Education Support Officer). If, for any reason, the DSL or deputy DSL is not available to be in school, they will be contactable by telephone or online video.
- 6.2 Once pupils have returned to school, it is conceivable that staff and other adults may identify new safeguarding concerns about individual children as they see them in person following the school’s closure period. Should this situation arise, staff and other adults **must** alert the DSL or deputy DSL of their concerns at the earliest possible opportunity. In the absence of the DSL or deputy DSL, the member of staff or other adult must alert the Head teacher or other senior manager immediately. Any concerns must be recorded in writing in the usual way for recording using the school’s normal recording system. Resources in the form of additional support for the DSL will be made available should there be an increase in safeguarding concerns with pupils returning to school.
- 6.3 It is important that all our school staff and other adults have access to a trained DSL (or deputy).
- 6.4 In line with Safeguarding and Child Protection Policy and procedures, DSLs (and deputies) will continue to do what they reasonably can to keep up to date with safeguarding developments, such as via safeguarding partners, newsletters and professional advice groups.
- 6.5 Where, during a period of lockdown, either local or national, a trained DSL or deputy is not on site and not contactable by telephone or online video, the Head teacher (or appropriately trained SLT member) will assume responsibility for co-ordinating safeguarding. This might include updating and managing access to child protection online management system (e.g. CPOMS) or the normal school recording system and liaising with the offsite DSL or deputy and, as required, liaising with children’s social workers where they require access to children in need and/or to carry out statutory assessments at the school.
- 6.6 We will ensure that we have necessary, appropriate and up-to-date child protection information on all our pupils, paying particular regard to those who have are or have been learning at home but have subsequently returned to school. Our records will be updated accordingly as soon as possible so that they remain accurate. This may involve asking parents/carers to make the school aware of any changes regarding their child’s welfare, health and wellbeing that the school should be aware of prior to the child returning to school. Parents/carers should inform the school of any new issues which arise once their child has returned to school.
- 6.7 Following a local or national lockdown/period of self-isolation it is conceivable that staff and other adults may identify new safeguarding concerns about individual children as they see them in person following the school’s closure period. Should this situation arise, staff and other adults **must** alert the DSL or deputy DSL of their concerns at the earliest possible opportunity. In the absence of the DSL or deputy DSL, the member of staff or other adult must alert the Head teacher or other senior manager immediately. Any concerns must be recorded in writing in the usual way for recording using the school’s normal recording system. Resources in the form of additional

Ref:	Child Protection Addendum Covid-19	Type:	Policy
Version:	03	Owner:	Head teacher
Date:	September 2020	Status:	LGB Approved

support for the DSL will be made available should there be an increase in safeguarding concerns with pupils returning to school.

## 7.0 REPORTING A CONCERN

- 7.1 Where staff or other adults have a concern about a child, they should continue to follow the procedures outlined in the Safeguarding and Child Protection procedures. Staff and other adults are reminded of the need to report any concern immediately and without delay to the DSL or deputy DSL. In the absence of an onsite DSL or deputy DSL, all concerns must be directed to the Head teacher.
- 7.2 Any concerns or allegations made against staff or other adults in the school must be directed to the Head teacher. Concerns or allegations made against the Head teacher should be directed to the Chair of Governors in accordance with the existing Safeguarding and Child Protection Policy and procedures. Cumbria Safeguarding Children Partnership (SCP) have procedures for reporting and dealing with allegations against adults and details of the Designated Officer (LADO) appointed by the Local Authority.
- 7.3 If at any point there is a risk of immediate serious harm to a child a referral will be made Cumbria Safeguarding Hub immediately – **anybody can make a referral**. If a referral is made by a member of staff or other adult, they should inform the DSL or deputy DSL as soon as possible.  
**Cumbria Safeguarding Hub - 0333 240 1727**  
E mail: [safeguardinghub.fax@cumbria.gov.uk](mailto:safeguardinghub.fax@cumbria.gov.uk)

## 8.0 PEER ON PEER/CHILD ON CHILD ABUSE

- 8.1 We recognise that a revised process may be required for managing any report of peer on peer or child on child abuse and supporting victims.
- 8.2 Where, during a local lockdown or periods of self-isolation, school staff receive a report of peer on peer/child on child abuse either online or in the wider school community, they will follow the principles as set out in part 5 of 'Keeping Children Safe in Education' and those outlined within the Safeguarding and Child Protection Policy procedures.
- 8.3 The school will listen to and work with the young person, parents/carers and any multi-agency partner required to ensure the safety and security of that young person. Concerns and actions will be recorded on the normal school recording system and appropriate referrals made.

## 9.0 ONLINE SAFETY

- 9.1 The school will continue to provide a safe environment, including online.
- 9.2 This includes the use of the online filtering system. Where children and young people are using computers and other IT media in the school, appropriate supervision will be in place.
- 9.3 Any online learning will be delivered in accordance with the Online Safety Policy and procedures and staff/pupil acceptable use agreements. In addition any procedures which have been put in place for remote learning.

Ref:	Child Protection Addendum Covid-19	Type:	Policy
Version:	03	Owner:	Head teacher
Date:	September 2020	Status:	LGB Approved

## 10.0 MENTAL HEALTH AND WELLBEING

- 10.1 We understand that negative experiences and distressing life events, such as the current circumstances, can affect the mental health of children and their parents. We will ensure appropriate support is in place for them.
- 10.2 All our staff and other adults will be made aware of the impact the current circumstances can have on the mental health of those pupils (and their parents) who are continuing to work from home, including when setting expectations of children's' work. The DfE has provided separate [guidance on remote education practices](#) during the coronavirus outbreak.

## 11.0 SAFETY OF CHILDREN USING ONLINE SYSTEMS REMOTE FROM SCHOOL

- 11.1 It is important that all staff who interact with children, including online, continue to look out for signs that a child may be at risk. Any such concerns should be dealt with in accordance with the Safeguarding and Child Protection Policy and procedures and where appropriate, referrals will be made to children's social care and as required, the Police. Any member of staff who has concerns about a child must report this to the DSL in the first instance and failing the availability of the DSL, the Head teacher. Online teaching should follow the same principles as set out in the school staff Code of Conduct.
- 11.2 The school will ensure any use of online learning tools and systems is in line with privacy and data protection (GDPR) requirements. The delivery of any live lessons must be agreed with the Head teacher or other senior leader in advance. Consent must be sought from both parents and pupils.
- 11.3 We will ensure that children who are being asked to work online have very clear reporting routes in place so they can raise any concerns with the school whilst online e.g. incidents of cyberbullying and we will apply the same child-centred safeguarding practices as if children were learning at school.
- 11.4 Staff have read the [20 safeguarding considerations for livestreaming](#) prior to delivering any livestreamed sessions. (see Appendix 2)
- 11.5 Children and young people accessing remote learning receive guidance on keeping safe online and know how to raise concerns with the school.
- 11.6 We also recommend the following to pupils and parents:
- Childline ([www.childline.org.uk](http://www.childline.org.uk)) – for support
  - UK Safer Internet Centre (<https://reportharmfulcontent.com/>) - to report and remove harmful online content
  - CEOP (<https://www.ceop.police.uk/safety-centre/>) - for advice on making a report about online abuse
- 11.7 Parents and carers have received information about keeping children safe online with peers, the school, other education sites they may access and the wider internet community, there is support information available on the school website.
- 11.8 We have set out the school's approach, including the sites children will asked to access and set out who from the school (if anyone) their child is going to be interacting with online

Ref:	Child Protection Addendum Covid-19	Type:	Policy
Version:	03	Owner:	Head teacher
Date:	September 2020	Status:	LGB Approved



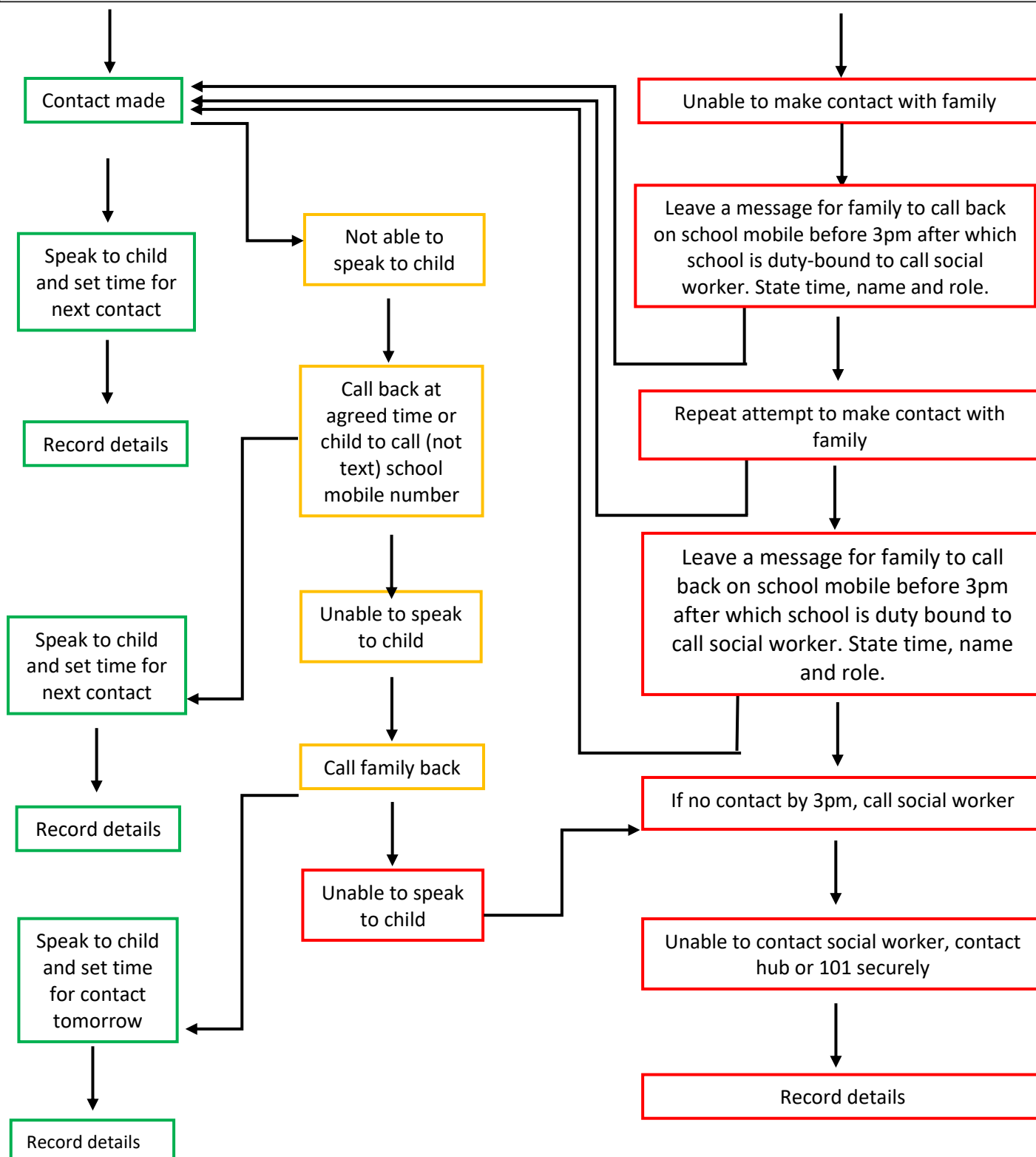
- 11.9 In addition, the Government has also provided:
- support for parents and carers to keep children safe from online harms, includes advice about specific harms such as online child sexual abuse, sexting, and cyberbullying
  - support to stay safe online includes security and privacy settings, blocking unsuitable content, and parental controls
- 11.10 Free additional support for staff in responding to online safety issues can be accessed from the Professionals Online Safety Helpline at the UK Safer Internet Centre.

## 12.0 SUPPORTING CHILDREN NOT IN SCHOOL

- 12.1 The school is committed to ensuring the safety and wellbeing of all its children and young people.
- 12.2 Where the DSL has identified a child to be on the edge of social care support, or who would normally receive pastoral-type support, they will ensure that a robust communication plan is in place for that child.
- 12.3 Details of this plan must be recorded on the school normal recording system as should a record of any contact made. The communication plans can include: remote contact; phone contact; or socially distant door-step visits. Other individualised contact methods should be considered and recorded.
- 12.4 The school and its DSL will work closely with all stakeholders to maximise the effectiveness of any communication plan. This plan must be reviewed regularly (at least once a fortnight) and where concerns arise, the DSL will consider any referrals as appropriate.
- 12.5 We will share safeguarding and child protection messages on the school website and social media pages.
- 12.6 We recognise that school is a protective factor for children and young people and the current circumstances can affect the mental health of pupils, their parents/carers and immediate family. To this end, we will do everything we can to minimise the effects in relation to any online resources made available to pupils' home learning.
- 12.7 Teachers at our school will be made aware of the above in setting expectations of pupils' work where they are at home.
- 12.8 We will endeavour to support our pupils and their families in the current circumstances using the existing school systems and processes.
- 12.9 The DfE have also issued advice for parents/carers on supporting children and young people's mental health and wellbeing during the coronavirus (COVID-19) outbreak.
- 12.10 Welfare checks will be made on all pupils not in school. The frequency and method of communication will be decided by the Head teacher working with the DSL and SENDCO.

Ref:	Child Protection Addendum Covid-19	Type:	Policy
Version:	03	Owner:	Head teacher
Date:	September 2020	Status:	LGB Approved

**PHONE CALL/CONTACT TO FAMILIES OF CHILDREN WITH A SOCIAL WORKER (CP, CIN, CLA)**



Many families have multiple agencies working with them and will be inundated by welfare calls, so it may be prudent to schedule a timetable with other agencies e.g. siblings' schools, AP providers including HHTS, Young Carers etc. These students may be subject to Critical Absence Plans. Please ensure that the other organisation informs the school of contact/concerns so the information can still be logged using CPOMS or similar recording system.

Ref:	Child Protection Addendum Covid-19	Type:	Policy
Version:	03	Owner:	Head teacher
Date:	September 2020	Status:	LGB Approved

# Twenty Safeguarding Considerations for Lesson Livestreaming

Just because schools are supporting students remotely and sending work home does NOT mean that you need to livestream lessons. This should only be done where you are equipped to do so safely. But if you are considering it, bear these things in mind:

- 1 Only use school-registered accounts, never personal ones
- 2 Don't use a system that your SLT has not approved
- 3 Will some students be excluded? Do they have Internet, a device and a quiet place?
- 4 Do students and staff have a safe and appropriate place with no bedrooms or inappropriate objects/information visible?
- 5 Check the link in an incognito tab to make sure it isn't public for the whole world!
- 6 Has your admin audited the settings first (who can chat? who can start a stream? who can join?)
- 7 What about vulnerable students with SEND and CP needs?
- 8 Don't turn on streaming for students by mistake – joining a stream ≠ starting a stream
- 9 Never start without another member of staff in the 'room' and without other colleagues aware
- 10 Once per week may be enough to start with – don't overdo it and make mistakes.
- 11 Keep a log of everything - what, when, with whom and anything that went wrong
- 12 Do you want chat turned on for pupils? Can they chat when you aren't there?
- 13 Avoid one-to-ones unless pre-approved by SLT
- 14 Remind pupils and staff about the AUP agreements they signed\* The rules are the same
- 15 Remind pupils and staff about the safeguarding policy and reporting process – does it work remotely?
- 16 Do you want to record it? Are students secretly recording it? You may not be able to tell.
- 17 How can students ask questions or get help?
- 18 What are the ground rules? When can students speak / how?
- 19 If you don't understand the system, if it won't be safe or reliable, if teaching won't be enhanced, DON'T DO IT.
- 20 Is your DPO happy? GDPR covered? Parental consent needed?



THE DIGISAFE TEAM WILL BE EXPLORING SAFE SETTINGS FOR THE MAIN PLATFORMS CHECK OUR SOCIAL PAGES @LGfLDigiSafe

\* Need templates? See safepolicies.lgfl.net

Ref:	Child Protection Addendum Covid-19	Type:	Policy
Version:	03	Owner:	Head teacher
Date:	September 2020	Status:	LGB Approved

Ref:	Accessibility Plan	Type:	Policy
Version:	05	Owner:	Head teacher
Date:	March 2020	Status:	LGB Approved